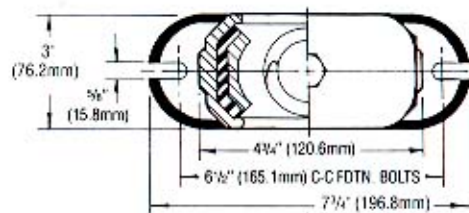




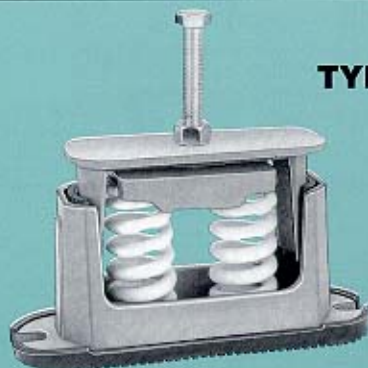
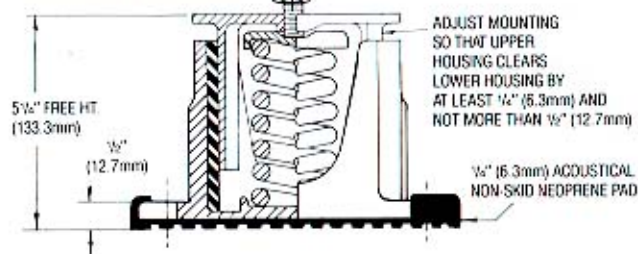
TYPE CE-1

Type & Size	Max. Load, lbs. (Kg)	Spring Color	Defl., ins. (mm)
CE-1-19	85 (38.5)	Pink	1.36 (34.5)
CE-1-21	115 (52.1)	Black	1.31 (33.2)
CE-1-22	170 (77.1)	Blue	1.28 (32.5)
CE-1-23	225 (102.0)	Yellow	1.26 (32.0)
CE-1-24	325 (147.4)	Brown	1.23 (31.2)
CE-1-25	450 (204.1)	Red	1.22 (30.9)
CE-1-26	600 (272.1)	Purple	1.17 (29.7)
CE-1-27	750 (340.2)	Orange	1.06 (26.9)
CE-1-28	900 (408.2)	Green	1.02 (25.9)
CE-1-31	1100 (496.9)	Gray	.83 (21.0)
CE-1-32	1300 (589.6)	White	.74 (18.7)
★ CE-1-35	1500 (680.4)	Gold	.70 (17.7)

★ Free height 1/2" (12.7mm) higher than shown



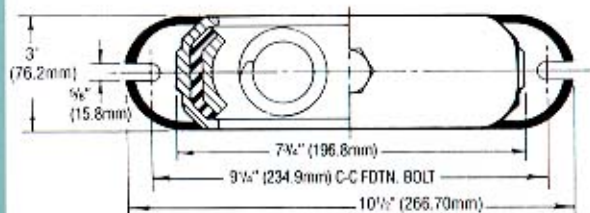
5/8" (12.7mm) DIA. X 3 1/2" (88.9mm)
LONG ADJUSTING & LEVELING BOLT



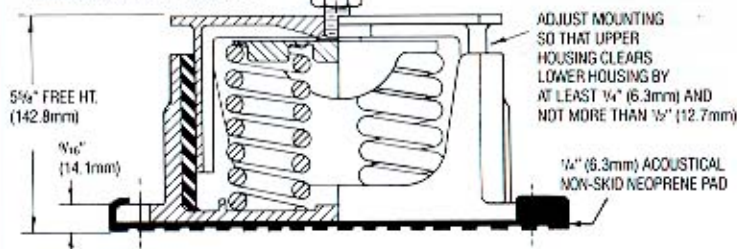
TYPE CE-2

Type & Size	Max. Load, lbs. (Kg)	Spring Color	Defl., ins. (mm)
CE-2-25	900 (408.2)	Red	1.22 (30.9)
CE-2-26	1200 (544.3)	Purple	1.17 (29.7)
CE-2-27	1500 (680.4)	Orange	1.06 (26.9)
CE-2-28	1800 (816.4)	Green	1.02 (25.9)
CE-2-31	2200 (997.9)	Gray	.83 (21.0)
CE-2-32	2600 (1179.3)	White	.74 (18.7)
★ CE-2-35	3000 (1360.8)	Gold	.70 (17.7)

★ Free height 1/2" (12.7mm) higher than shown



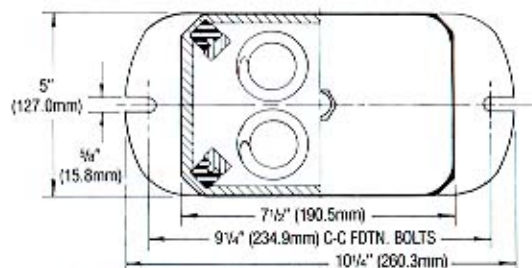
5/8" (15.8mm) DIA. X 3 1/2" (88.9mm)
LONG ADJUSTING & LEVELING BOLT



TYPE CE-4

Type & Size	Max. Load, lbs. (Kg)	Spring Color	Defl., ins. (mm)
CE-4-25	1800 (816.4)	Red	1.22 (30.9)
CE-4-26	2400 (1088.6)	Purple	1.17 (29.7)
CE-4-27	3000 (1360.8)	Orange	1.06 (26.9)
CE-4-28	3600 (1632.9)	Green	1.02 (25.9)
CE-4-31	4400 (1995.8)	Gray	.83 (21.0)
CE-4-32	5200 (2358.7)	White	.74 (18.7)
★ CE-4-35	6000 (2721.6)	Gold	.70 (17.7)

★ Free height 1/2" (12.7mm) higher than shown



5/8" (15.8mm) DIA. X 3 1/2" (88.9mm)
LONG ADJUSTING & LEVELING BOLT

