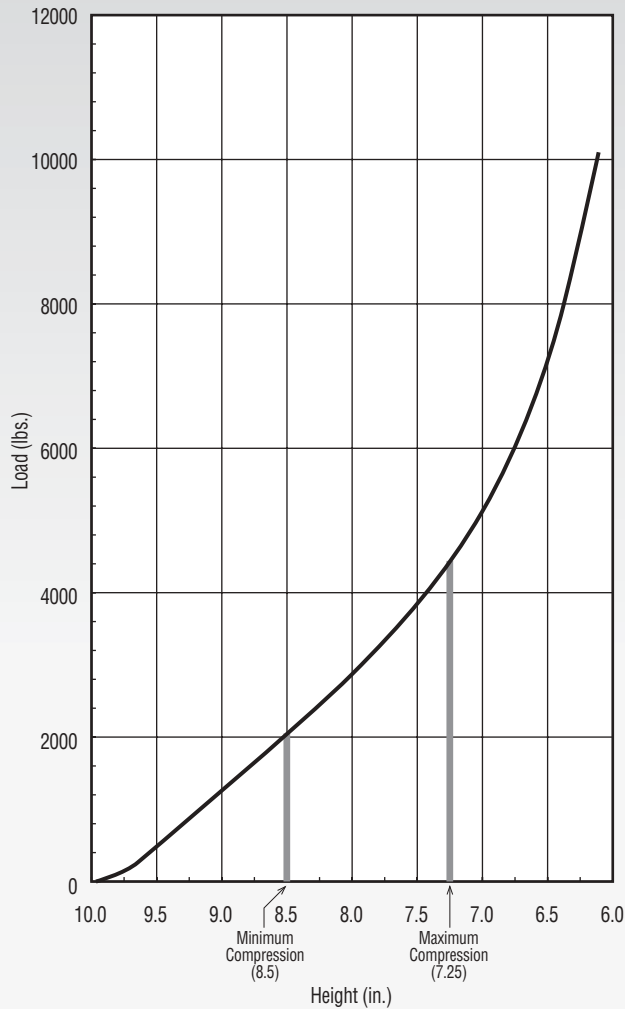
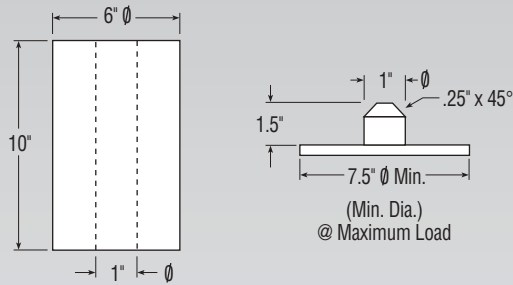


IMPERIAL

Compression (%)	15.0	20.0	22.5	25.0	27.5
Load (lbs.)	1980	2870	3344	3830	4340
Height (in.)	8.5	8.0	7.8	7.5	7.3
Rate (lbs./in.)	1707	1857	1922	1983	2039
Effective Deflection (in.)	1.2	1.5	1.7	1.9	2.1
Natural Freq. (CPM)	175	151	143	135	129
Maximum OD (in.)	7.6				
Weight (lbs.)	9.84				



METRIC

Compression (%)	15.0	20.0	22.5	25.0	27.5
Load (kN)	8.80	12.76	14.84	17.02	19.29
Height (mm)	216	203	198	191	185
Rate (kN/m)	299	325	336	347	357
Effective Deflection (mm)	30	38	43	48	53
Natural Freq. (Hz)	2.92	2.52	2.38	2.25	2.15
Maximum OD (mm)	193				
Weight (kg)	4.48				

