

# SLOT NOZZLES FOR FIXED INSTALLATION



## REPLACE OPEN PIPE OF DIAMETERS:



3 - 4 mm

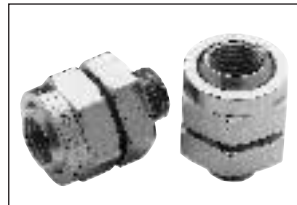
1/8"

## BENEFITS

Reduces the noise level	14 - 17 dB(A)
Decreases air consumption	23 - 36 %
Safety nozzle	Meets OSHA standards

## ACCESSORY

### ADJUSTABLE SWIVEL JOINT

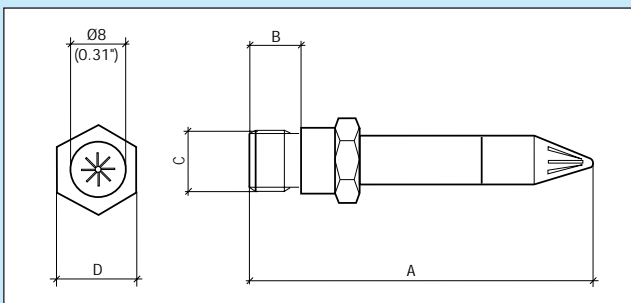


An adjustable swivel joint for setting the direction of the air cone. The joint enables easy fine tuning of the blowing angle without affecting other fixed equipment. Correct adjustment of the blowing angle results in a lower noise level and increased efficiency.

Further information in: Accessories.

The Silvent 511 and 512 are slot nozzles that generate a directed air jet. The nozzles are well suited to all-purpose blowing and blowing in confined spaces. Due to their compact size, these nozzles are frequently used in machines and tools where clearance is limited. Both nozzles fulfill OSHA safety regulations, which stipulate that air pressure may not exceed 210 kPa (30 psi) in direct contact with skin. The nozzles combine the advantages of low noise level and low air consumption with high blowing force. Patented by manufacturer.

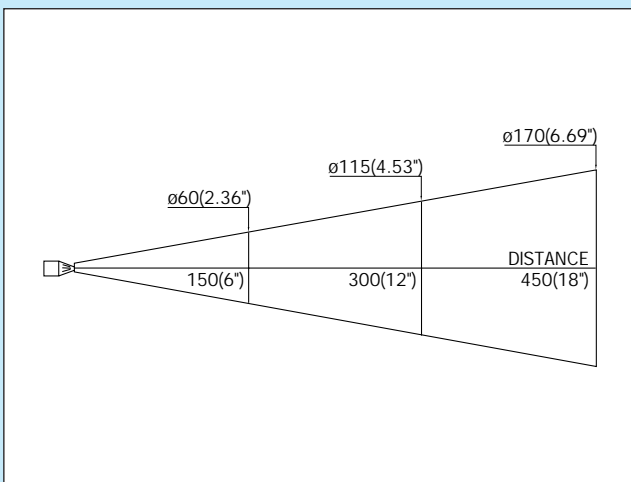
## DIMENSIONS



## PRODUCT INFORMATION

ORDER NO./ MODEL		511	512
A	mm	55.8	30.3
	"	2.19	1.19
B	mm	8	8
	"	0.31	0.31
C	BSP	1/8"	1/8"
	NPT	1/8"-27	1/8"-27
D	mm	12	12
	"	0.47	0.47

## AIR CONE PATTERN



Replaces open pipe	mm	4	4
	"	1/8	1/8
Air consumption	Nm <sup>3</sup> /h	19	19
	scfm	11.2	11.2
Sound level	dB(A)	79	79
Blowing force	N	3.2	3.2
	oz	11.3	11.3
Max. temp.	°C	-20/+70	-20/+70
	°F	-4/+158	-4/+158
Weight	g	20	8
	lbs	0.044	0.018
Nozzle material	Zinc		

Further information in: Technical specifications.

Max. operating pressure: 1.0 MPa (143 psi)

# APPLICATIONS



The picture shows a packaging machine that is equipped with 25 511s. The nozzles transport mustard lids. The noise level at the machines has been more than halved.



Blow-off after welding. One of the largest wheel rim manufactures in Europe, Prins Dokkum in Holland, uses Silvent's blowing nozzles in a number of different blowing operations. Here, an air bar with Silvent 511 nozzles. The bar is used for blowing away scale and debris following spot welding.

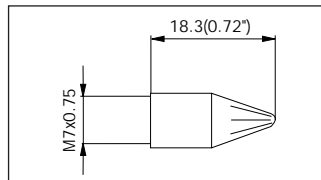


Blow-off at a lathe with a FLEXBLOW hose and a 511 nozzle.

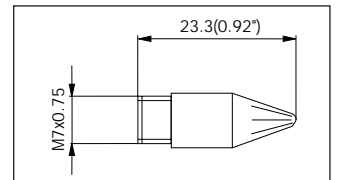


The picture shows four Silvent 5001 nozzles mounted around a plastic strip puller. The nozzles blow the plastic strip dry of water during continuous production. The company has confirmed that air consumption has decreased significantly and that the noise level has been reduced by 20% since switching from "open-pipe blowing".

## ALTERNATIVE NOZZLES



The Silvent 5001 is a slot nozzle that is used in a number of products in the Silvent range. The 5001 is sold both as a spare part and an alternative nozzle. The cone pattern and other technical specifications are the same as for the 511 and 512. The nozzle has M7 x 0.75 female connection thread.



The Silvent 5003 has M7 x 0.75 male connection thread. In other aspects, performance equivalent to the 511.