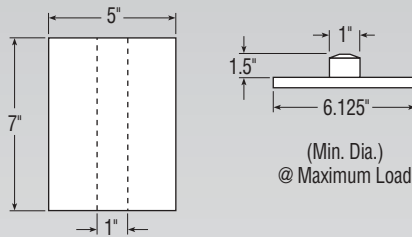


### IMPERIAL

<b>Compression (%)</b>	15.0	20.0	22.5	25.0	27.5
<b>Load (lbs.)</b>	1400	1770	2100	2480	2860
<b>Height (in.)</b>	5.95	5.6	5.4	5.3	5.1
<b>Rate (lbs./in.)</b>	1743	1886	1998	2103	2203
<b>Effective Deflection (in.)</b>	0.8	0.9	1.1	1.2	1.3
<b>Natural Freq. (CPM)</b>	210	194	183	173	165
<b>Maximum OD (in.)</b>	5.2	5.4	5.5	5.6	5.7
<b>Weight (lbs.)</b>	4.78				



### METRIC

<b>Compression (%)</b>	15.0	20.0	22.5	25.0	27.5
<b>Load (kN)</b>	6.22	7.87	9.33	11.02	12.71
<b>Height (mm)</b>	147	142	137	135	130
<b>Rate (kN/m)</b>	305	330	350	368	385
<b>Effective Deflection (mm)</b>	20	23	28	30	33
<b>Natural Freq. (Hz)</b>	3.50	3.23	3.05	2.88	2.75
<b>Maximum OD (mm)</b>	132	137	140	142	145
<b>Weight (kg)</b>	2.18				

